

**F Series** FxxxxD-xW 3KVDC Isolation 0.1W~3W Unregulated single output DIP14 PIN**Input Volt.****3.3, 5, 9, 12, 15, 24 VDC****Output Volt.****3.3, 5, 9, 12, 15, 24 VDC**

Other specifications required, please inquire us for details.

**Technical Parameters**

All the parameters below are tested at TA=25° C, nominal input voltage, rated output current.

Input Parameters

Volt. Range	+/- 10 %
Filter	Ceramic-capacitor

Isolation Parameters

Rated Isolation Volt.	3000 VDC
Leak current	<1 m A
Resistance	10 ⁹ Ohm
Capacitor	60 pF TYP.

Output Parameters

Volt. Precision	+/- 5 %, max.
(20 MHz BW) Ripple&Noise	150mV p-p, max.
Continuous short-circuit time	Immediately (<1s)
Linear volt. Calibration	+/- 1,2 % / 1,0 % of Vin
Load volt. Calibration	+/- 8 %, load = 20 ~ 100 %
Temperature index	+/- 0,02 % / °C

General Parameters

Efficiency	55% to 85 %
Switching Frequency	60~125 KHz, type.

Environmental Parameters

Operating Temp. (environmental)	- 40° C to + 85° C
Storage Temp.	- 55 °C to + 125 °C
Reducing rated value	See temperature derating graph below
Humidity	≤ 90 %, Non-compression
Colling method	Natural Free-air

Dimension

DIP Package size	20.4 x 10.0 x 7.1 mm
	0.8 x 0.39 x 0.28 inch
	5 g~9.5 g

Weight**External Package Material**

Non-conductive flame-retardant black plastics

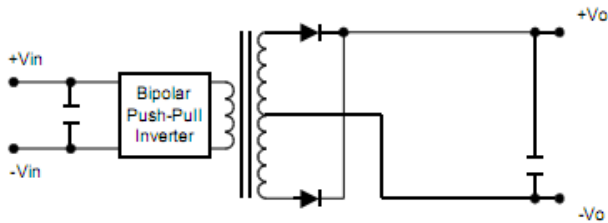
Typical Product List: (The parameters below are collected at 8 hours full-load aging test.)

Model No.	Input Volt. Vin(VDC)	Input Current Empty load (mA)	Input Current Full load (mA)	Output Volt. Vout(VDC)	Output Current (max.mA)	Efficiency Full load (%TYPE)
F0505D-W1	5	7	28	5	20	71
F0505D-1W	5	25	279	4.85	200	70
F1209D-1W	12	12	107	8.76	111	76
F0515D-2W	5	47	461	14.6	134	85
F0515D-3W	5	54	675	14.8	200	88

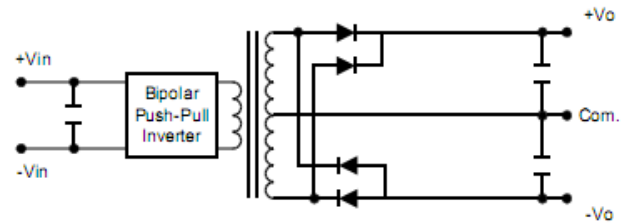


Functional Block Diagram:

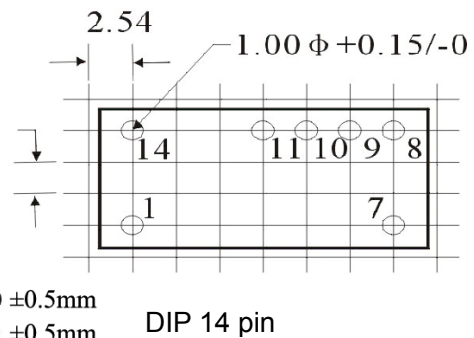
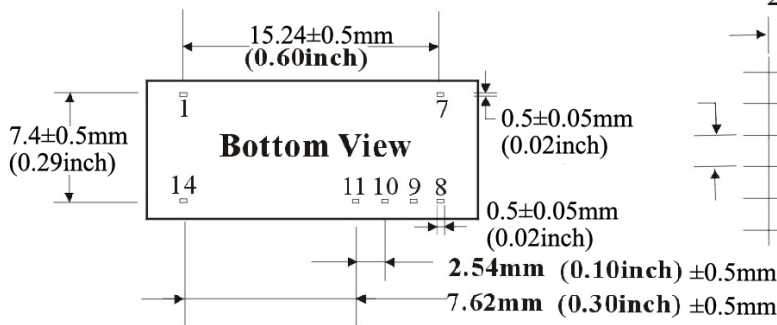
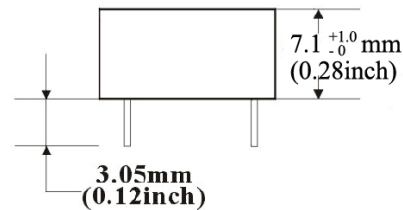
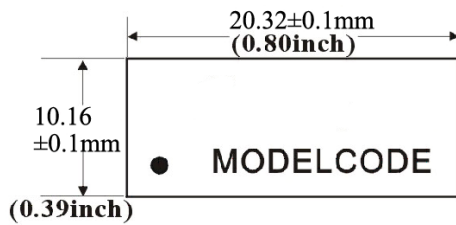
Single Output



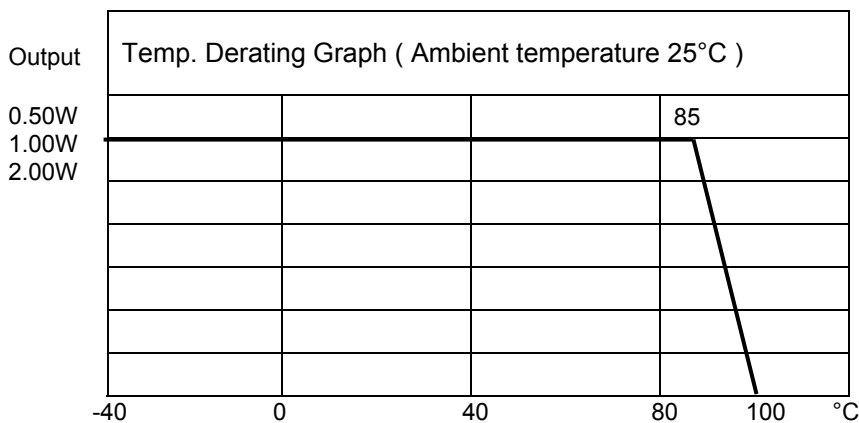
Dual Output



External Dimension & PCB Installation:



Temperature Derating Graph and PIN Definition



Pin	Function		
14	+	Vin	Input +
1	-	Vin	Input -
2~6			NC
7		NC	NC
8	+	Vout	Output +
9			NC
10	-	Vout	Output -
11~13			NC

* Note: the product design and specification are subject to change without notice.