



DIN RAIL FILTER

ZHN SERIES

All the patents are held accountable counterfeiting.

Features



- High Performance power filter
- Good interference suppression of common mode and differential mode

ZHN18, ZHN19 DIMENSIONS:97(H)*45(D)*56(W)mm WEIGHTS: 117g
 ZHN43 DIMENSIONS:85(H)*30(D)*52(W)/97(H)*45(D)*56(W)mm WEIGHTS: 117g

General specifications

INPUT

Input range 115/250VAC
 Input frequency 50~60Hz

Detail specifications

MODEL	Load (Rated Current)	Installation Type	Terminal Type	Max Leakage Current
16-ZHN18-10	10A	Screw fixing	Euroblock	115VAC/60HZ 0.3mA 250VAC/50Hz 0.6mA
16-ZHN18-20	20A	Screw fixing	Euroblock	
16-ZHN18-30	30A	Screw fixing	Euroblock	
16-ZHN19-10	10A	Din rail	Euroblock	115VAC/60HZ 0.5mA 250VAC/50Hz 1.0mA
16-ZHN19-20	20A	Din rail	Euroblock	
16-ZHN19-30	30A	Din rail	Euroblock	
16-ZHN43-10	10A	Screw fixing	Screw	115VAC/60HZ 0.3mA 250VAC/50Hz 0.6mA
16-ZHN43-20	20A	Screw fixing	Screw	
16-ZHN43-30	30A	Screw fixing	Screw	

CE Standards

IEC 60939-2, IEC 60939-3

Safety Standards

CE Marking

Environments

Operating Temperature -25 ~ 85°C, Ambient
 Operating Humidity 20 ~ 90% RH, No Condensing
 Storage Temperature -25 ~ 100°C, Ambient
 Vibration 2G, 10~500Hz, 3 axes

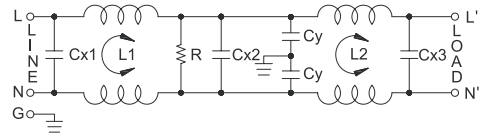
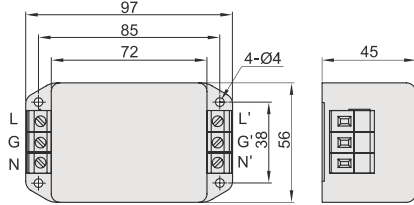


All the patents are held accountable counterfeiting.

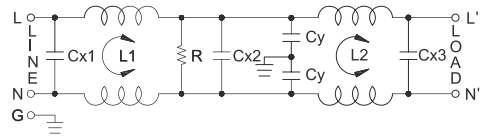
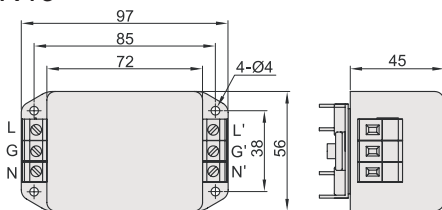
Mechanical details

Wiring diagram

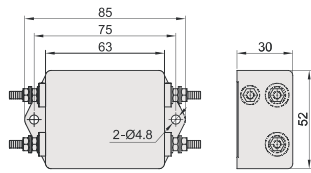
ZHN18



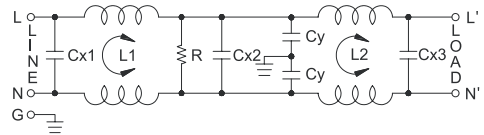
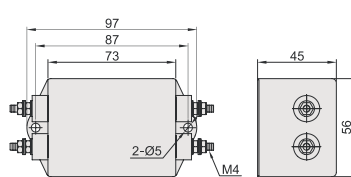
ZHN19



ZHN43-10/ZHN43-20



ZHN43-30



NOTE

1. Reign Power reserve the right to change specifications at any time without notice.